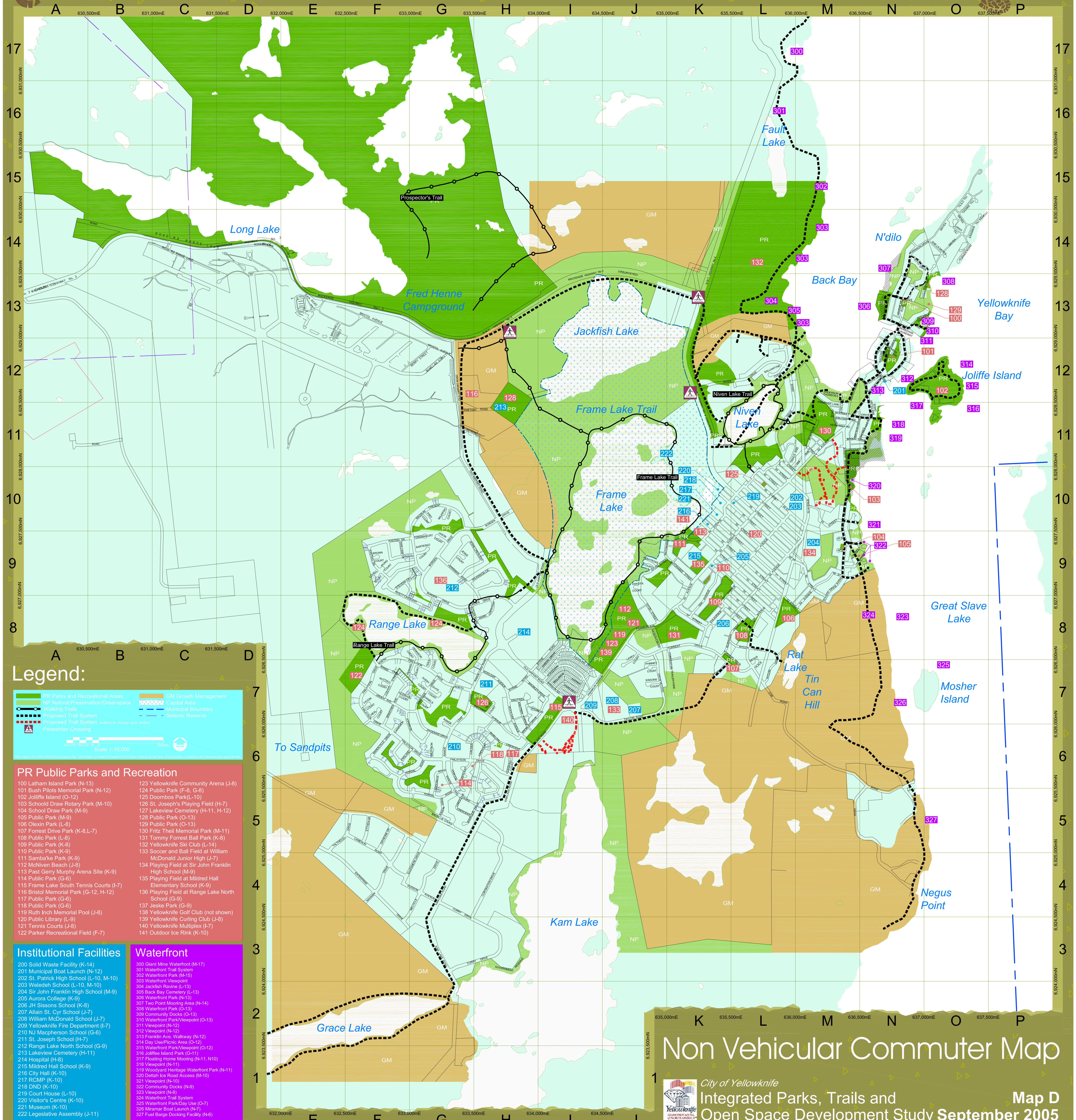


Leave Your Mark



Legend:

PR Parks and Recreational Areas	GM Growth Management
NP Natural Preservation/GreenSpace	Capital Area
Walking Trails	Municipal Boundary
Proposed Trail System	Saltic Reserve
Proposed Trail System (subject to change upon review)	
Pedestrian Crossing	

Scale: 1:10,000

PR Public Parks and Recreation

- | | |
|--|---|
| 100 Latham Island Park (N-13) | 123 Yellowknife Community Arena (J-8) |
| 101 Bush Pilots Memorial Park (N-12) | 124 Public Park (F-8, G-8) |
| 102 Joliffe Island (O-12) | 125 Doombos Park (L-10) |
| 103 School Draw Rotary Park (M-10) | 126 St. Joseph's Playing Field (H-7) |
| 104 School Draw Park (M-9) | 127 Lakeview Cemetery (H-11, H-12) |
| 105 Public Park (M-9) | 128 Public Park (O-13) |
| 106 Olexin Park (L-8) | 129 Public Park (O-13) |
| 107 Forrest Drive Park (K-8, L-7) | 130 Fritz Theil Memorial Park (M-11) |
| 108 Public Park (L-8) | 131 Tommy Forrest Ball Park (K-8) |
| 109 Public Park (K-8) | 132 Yellowknife Ski Club (L-14) |
| 110 Public Park (K-9) | 133 Soccer and Ball Field at William McDonald Junior High (J-7) |
| 111 Sambaka Park (K-9) | 134 Playing Field at Sir John Franklin High School (M-9) |
| 112 McNiven Beach (J-8) | 135 Playing Field at Mildred Hall Elementary School (K-9) |
| 113 Past Gary Murphy Arena Site (K-9) | 136 Playing Field at Range Lake North School (G-9) |
| 114 Public Park (G-6) | 137 Jesse Park (G-9) |
| 115 Frame Lake South Tennis Courts (I-7) | 138 Yellowknife Golf Club (not shown) |
| 116 Bristol Memorial Park (G-12, H-12) | 139 Yellowknife Curling Club (J-8) |
| 117 Public Park (G-6) | 140 Yellowknife Multiplex (I-7) |
| 118 Public Park (G-6) | 141 Outdoor Ice Rink (K-10) |
| 119 Ruth Inch Memorial Pool (J-8) | |
| 120 Public Library (L-9) | |
| 121 Tennis Courts (J-8) | |
| 122 Parker Recreational Field (F-7) | |

Institutional Facilities

- 200 Solid Waste Facility (K-14)
- 201 Municipal Boat Launch (N-12)
- 202 St. Patrick High School (L-10, M-10)
- 203 Weledeh School (L-10, M-10)
- 204 Sir John Franklin High School (M-9)
- 205 Aurora College (K-9)
- 206 JH Sissons School (K-8)
- 207 Allain St. Cyr School (J-7)
- 208 William McDonald School (J-7)
- 209 Yellowknife Fire Department (I-7)
- 210 N.J. Macpherson School (G-6)
- 211 St. Joseph School (H-7)
- 212 Range Lake North School (G-9)
- 213 Lakeview Cemetery (H-11)
- 214 Hospital (H-8)
- 215 Mildred Hall School (K-9)
- 216 City Hall (K-10)
- 217 RCMP (K-10)
- 218 DND (K-10)
- 219 Court House (L-10)
- 220 Visitor's Centre (K-10)
- 221 Museum (K-10)
- 222 Legislative Assembly (J-11)

Waterfront

- 300 Giant Mine Waterfront (M-17)
- 301 Waterfront Trail System
- 302 Waterfront Park (M-15)
- 303 Waterfront Viewpoint
- 304 Josephine Ravine (L-13)
- 305 Back Bay Cemetery (L-13)
- 306 Waterfront Park (N-13)
- 307 Two Point Mooring Area (N-14)
- 308 Waterfront Park (O-13)
- 309 Community Docks (O-13)
- 310 Waterfront Park/Viewpoint (O-13)
- 311 Viewpoint (N-12)
- 312 Viewpoint (N-12)
- 313 Franklin Ave. Walkway (N-12)
- 314 Day Use/Picnic Area (O-12)
- 315 Waterfront Park/Viewpoint (O-12)
- 316 Joliffe Island Park (O-11)
- 317 Floating Home Mooring (N-11, N10)
- 318 Viewpoint (N-11)
- 319 Woodyard Heritage Waterfront Park (N-11)
- 320 Deitah Ice Road Access (M-10)
- 321 Viewpoint (N-10)
- 322 Community Docks (N-9)
- 323 Viewpoint (N-9)
- 324 Waterfront Trail System
- 325 Waterfront Park/Day Use (O-7)
- 326 Milner Boat Launch (N-7)
- 327 Fuel Barge Docking Facility (N-8)

Non Vehicular Commuter Map